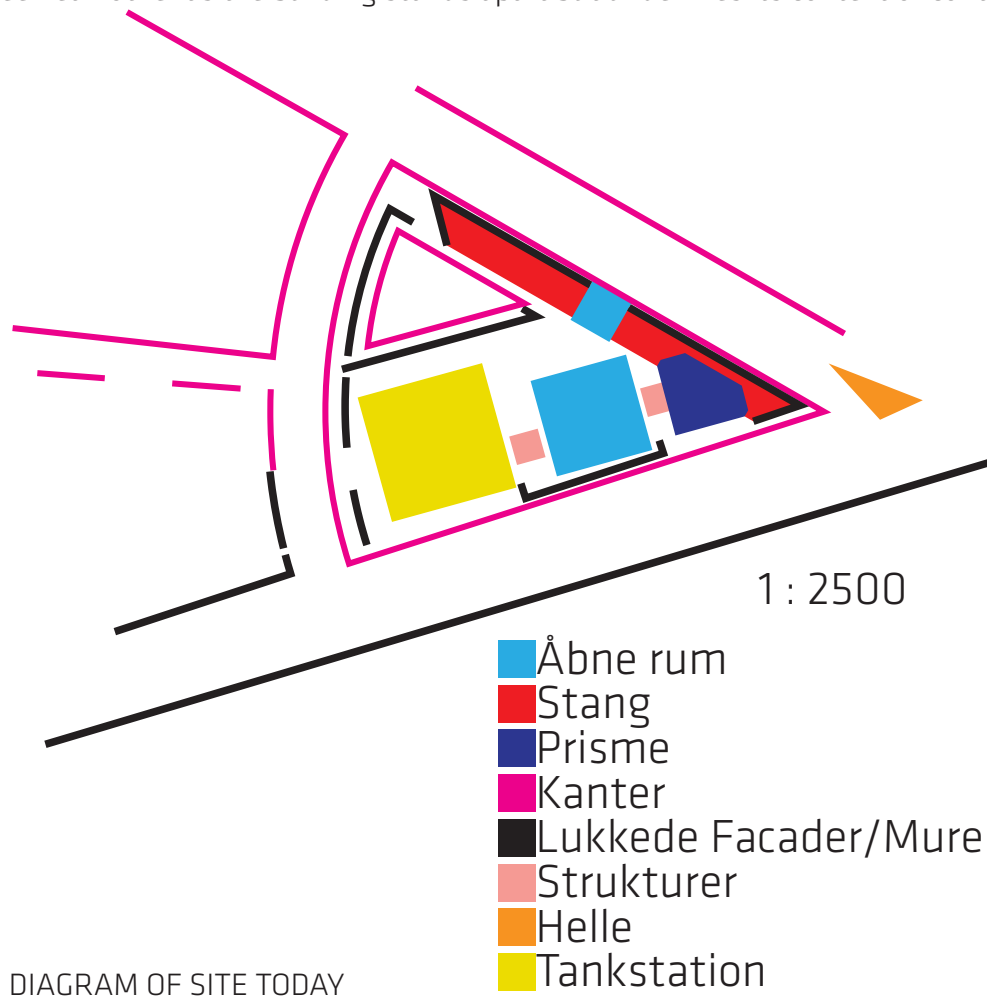


CONTEXTUAL DENSITY

10. semester

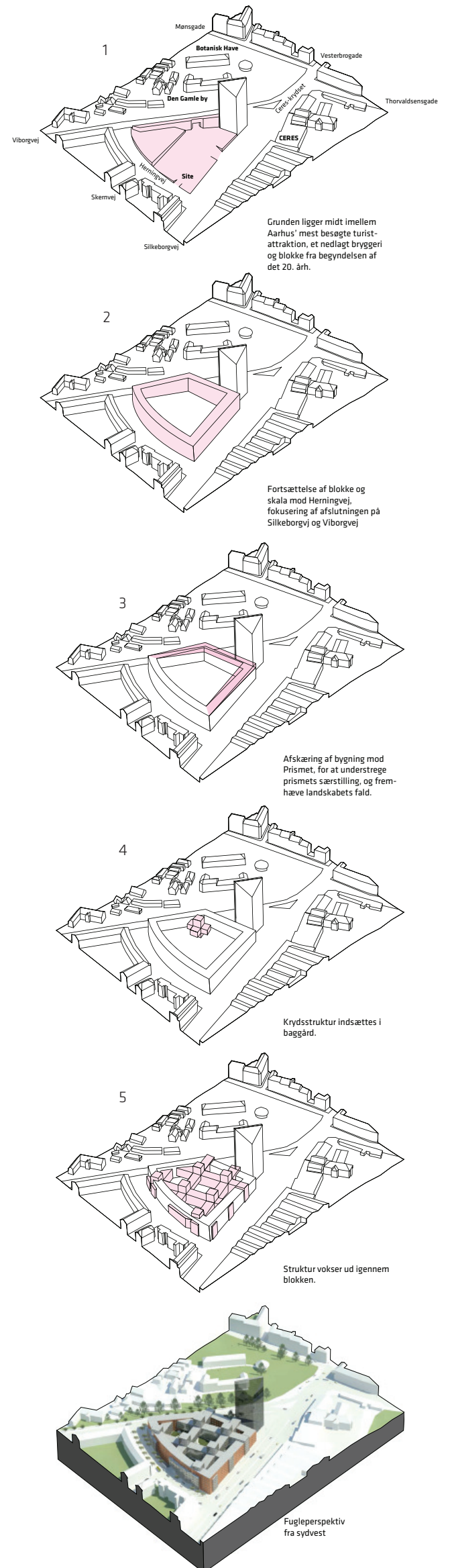
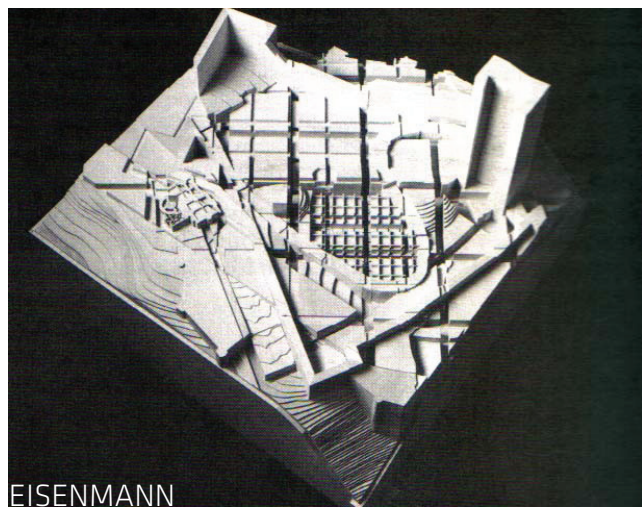
Contrast and Reflection, Fluent Spaces and Light, Inside/Outside

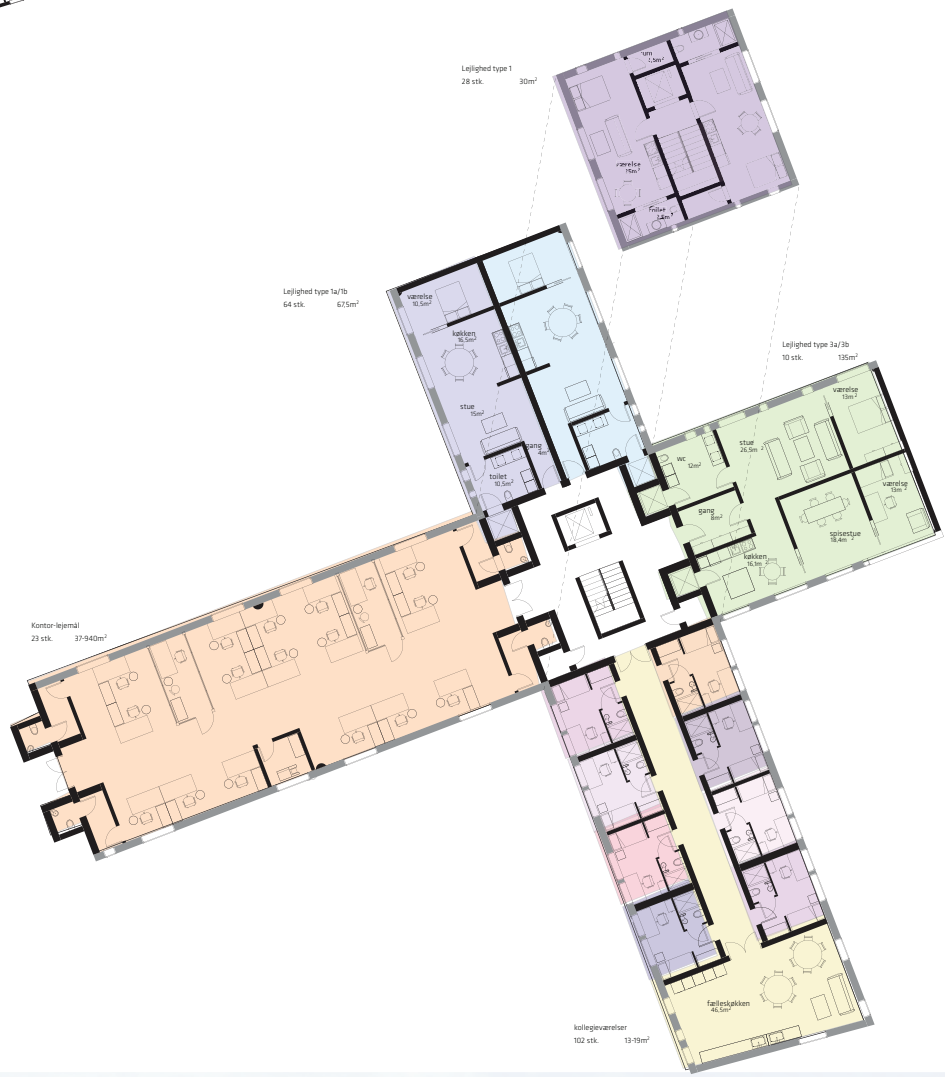
This project is a combined office-, apartment-, and dorm-building. Typologically it is a perimeter building with a gridstructure interpenetrating it. The inspiration for it was drawn from Peter Eisenmanns studies of deconstruction and use of grids, and Kasimir Malewitsch, the creator of abstract art, where composition and the relation of shapes create tension between the objects. The search for form sought to create a symbiosis between the elements, and between the elements and their context. A symbiosis between the democratic perimeter, which seeks only to underline the streets and the inner spaces from each other, and the equalising, uncontextual and tyrannical grid, which grows to engulf everything. The inner and outer spaces of the building flows between each other as the building stands apart but underlines its context of contrasts.



Starting-points:

- Completion of blockstructure
- Scale and respect
- Relationship between the structure and the tower





6



1:800

Silkeborgvej